

# AIGAL – Installation Manual

## INDEX

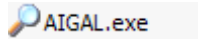
<b>Steps to install the system .....</b>	<b>3</b>
1) Installing AIGAL.....	3
<b>Starting the system .....</b>	<b>6</b>
1) Using the icon on Windows Desktop .....	6
2) Using the "Start" button .....	6
<b>Authorising the product.....</b>	<b>7</b>
Example of authorisation request .....	9

# AIGAL – Installation Manual

## Steps to install the system

### 1) *Installing AIGAL*

Run the installer **AIGAL.exe**

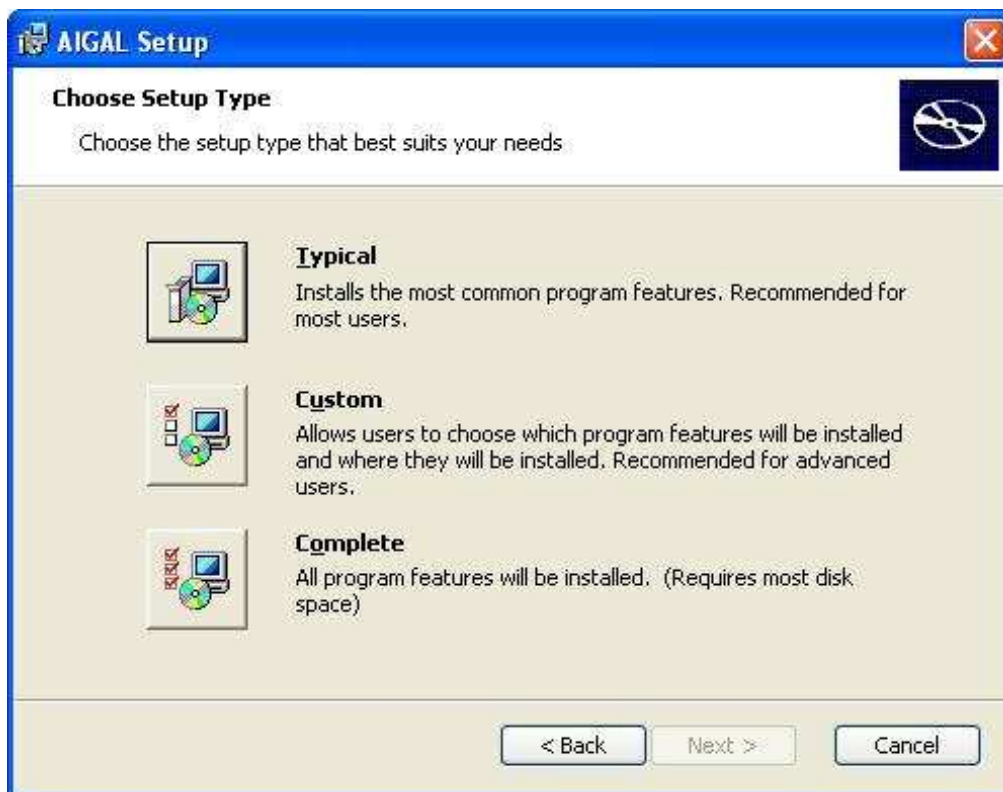


# AIGAL – Installation Manual

Main Screen, click the "Next" button

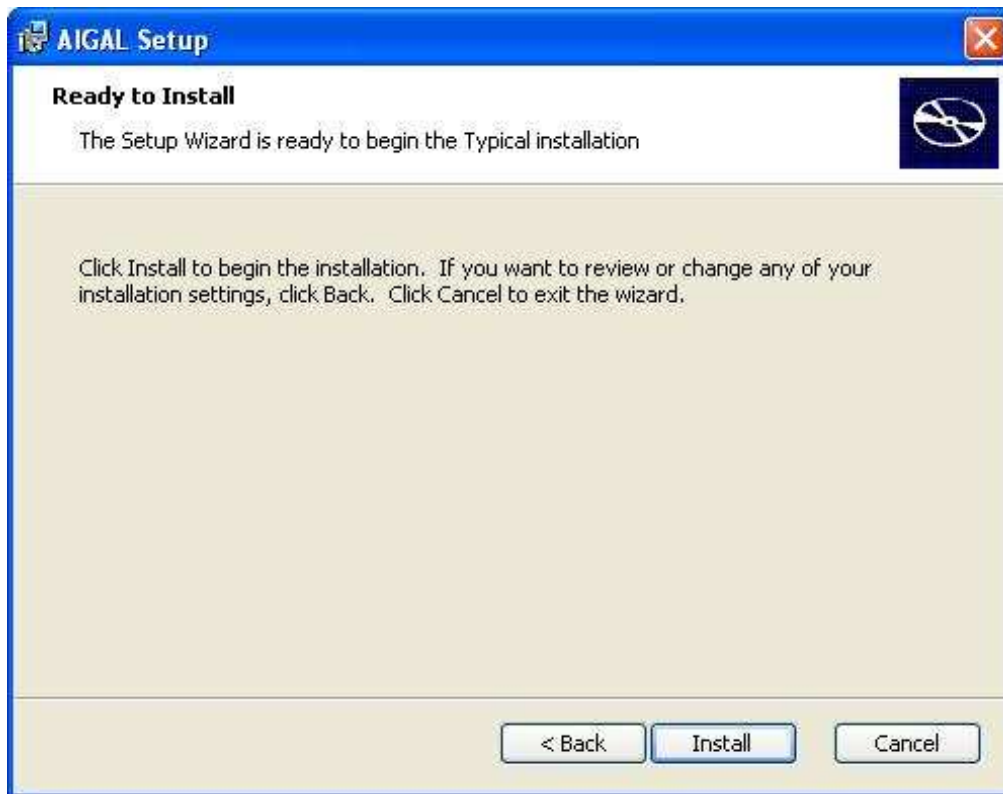


Click the "Typical" button



## AIGAL – Installation Manual

Click the **"Install"** button and wait for the process to finish



Once the installation is completed, click the **"Finish"** button



# AIGAL – Installation Manual

## Starting the system

Installation automatically sets to ways to start the system

### 1) *Using the icon on Windows Desktop*



### 2) *Using the "Start" button*

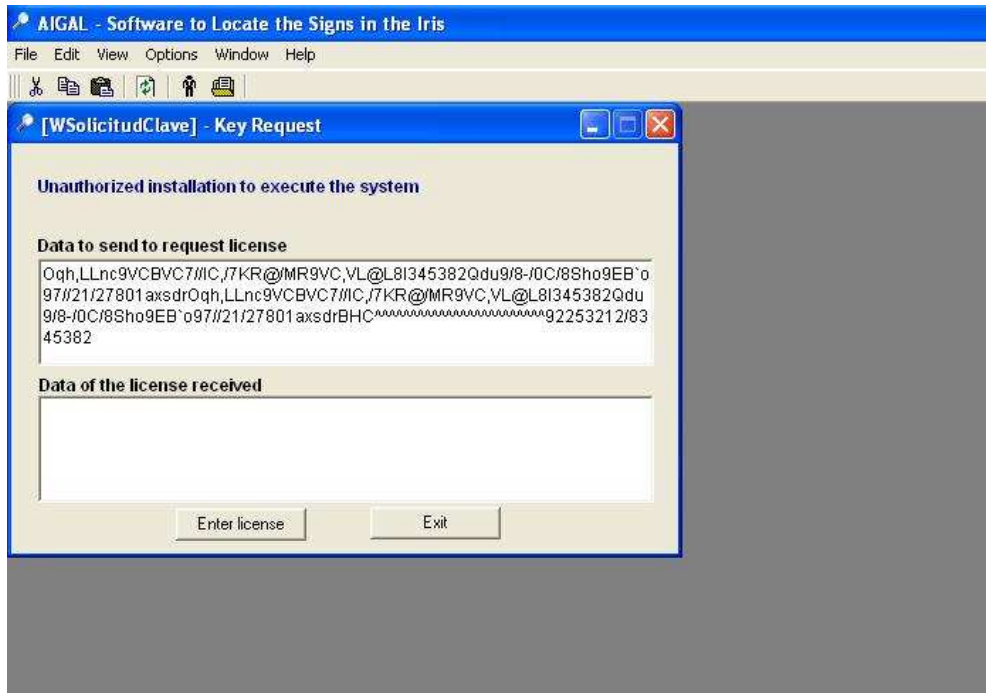
Start / All programs / AIGAL / Iris Analysis System



# AIGAL – Installation Manual

## Authorising the product

When executing the programme for the first time, the authorisation form displays





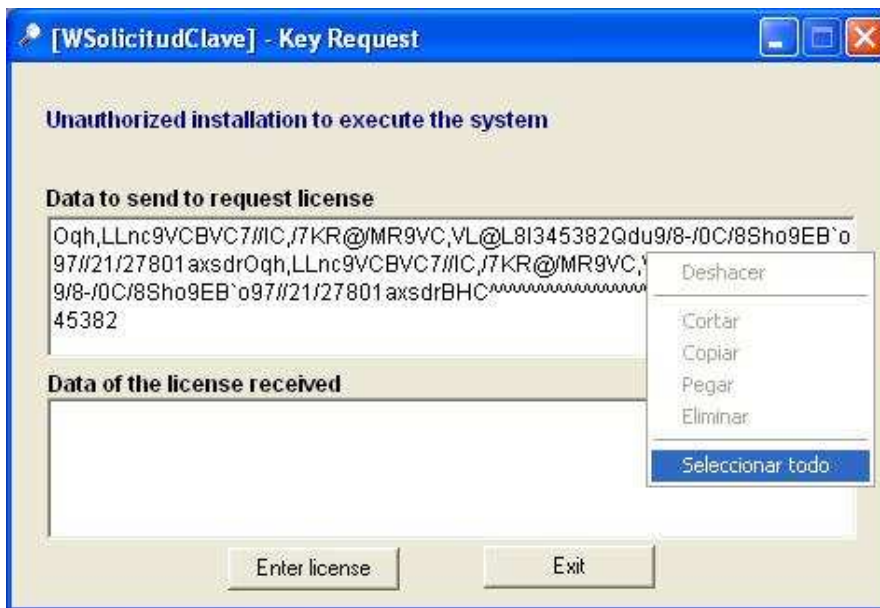
## AIGAL – Installation Manual

Send an e-mail to [claves@aigaliris.com](mailto:claves@aigaliris.com) with the following heading "**Requesting AIGAL License Authorisation**". Specify:

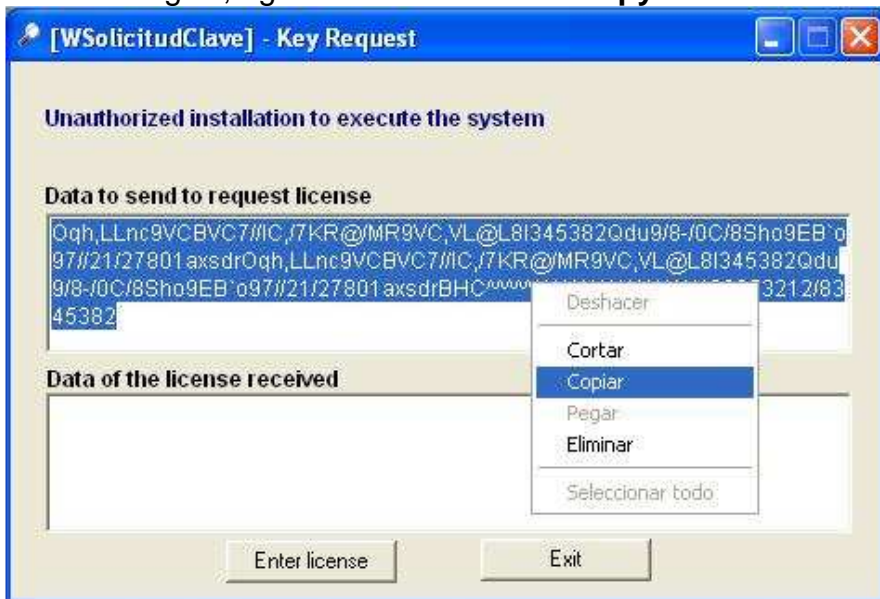
- 1) Complete name
- 2) Information for License Request

To carry out 4)

- 1) Copy all "**Data to send to request license**". Right-click and choose the option "**Select all**"



- 2) After selecting all, right-click and choose "**Copy**"

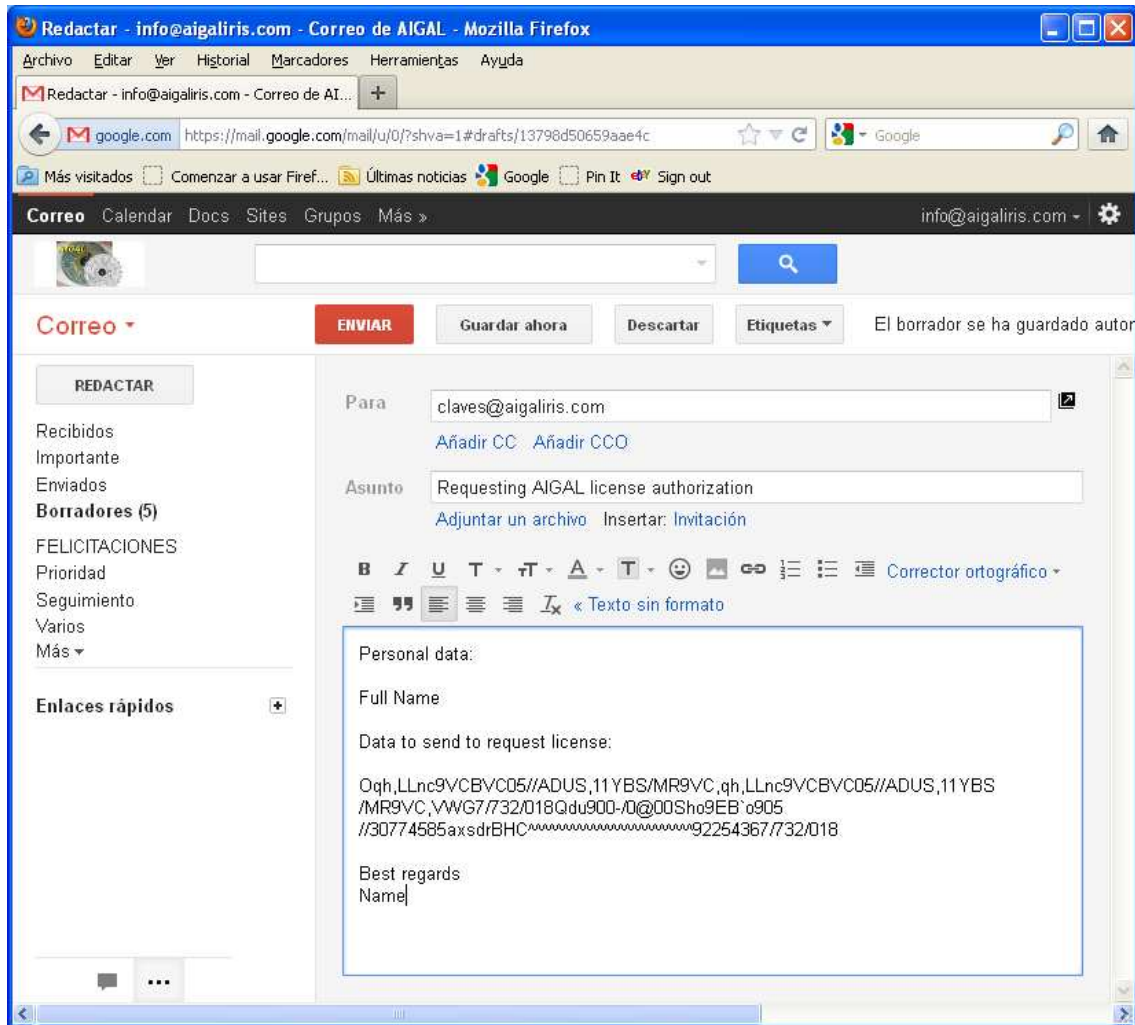




## AIGAL – Installation Manual

- Copy the information on the message. Right-click where you want the information to be, choose “**Paste**”

### Example of authorisation request

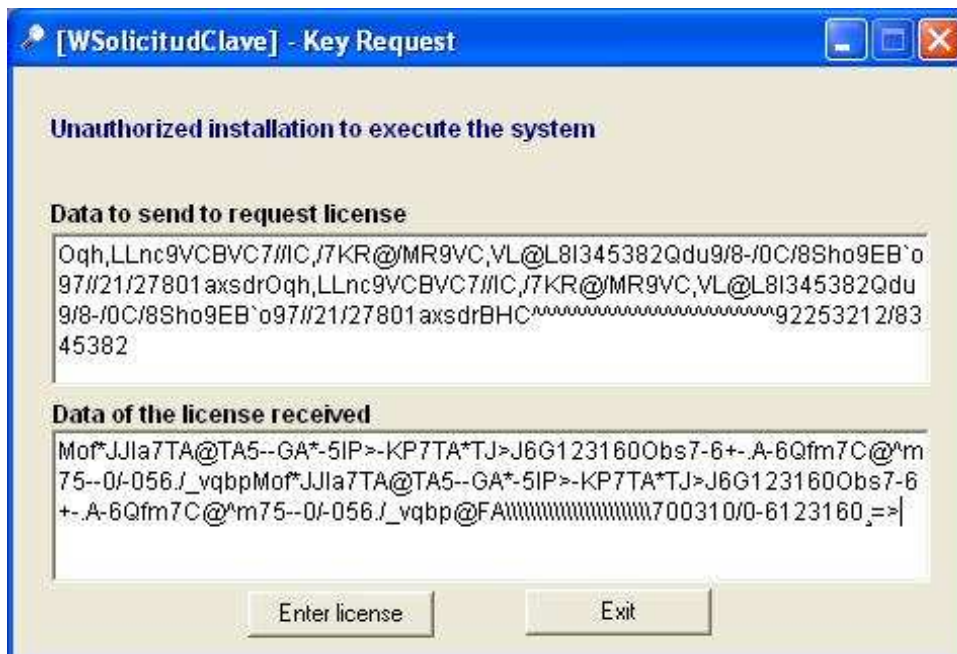


Once the e-mail is sent, await the reply with the product's activation key.

## AIGAL – Installation Manual

In the reply message, you will receive some information characters.

Copy these information characters. Paste them in “**Data of the license received**”. Click the “**Enter License**” button



Next, the system will authorise the installation. The current programme will be shut automatically.

Once the product is authorised, it is ready to be used.

**Thanks for choosing our product!**